

New Triangular Osaka Office: First of its Kind in Japan



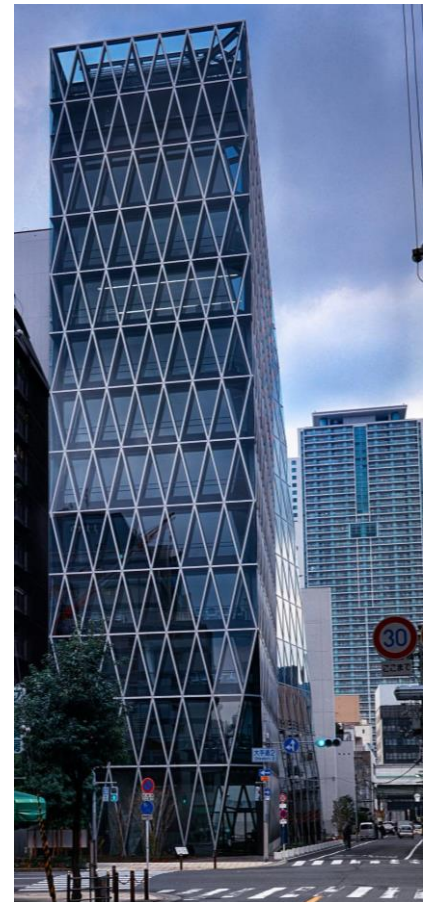
Slideshow of the new Osaka Office

Instead of the common approach of straight beams located inside windows, Otsuka's new office building employs crossed, slanted beams for increased strength also functioning as seismic control structures. Incorporating the windows into the beams makes the office more spacious and inviting. Pillars have been placed diagonally for increased strength and incorporated into the window frames to make the workspaces larger and easier to use.

The generous expanse of glass reflects the sky, resulting in a bright, translucent presence. The innovative design is characterized by glass extending all the way to the corners. The bright open space is to allow each individual the freedom to utilize his or her own unique creative instincts to come up with innovative ideas and products. We expect our new workplace to generate flexible thinking and original ideas, freed from conventional stereotypes.

Old Boys' (Old Girls') Club is another area where creative juices can be exchanged without the seriousness of a conference room. OB Club first opened its doors at the Tokyo headquarters in Kanda in 1986. Less than a year later, Osaka office opened its own. To continue the idea of offering a relaxing space for employees to gather, a new OB Club was added in the Shinagawa office in 2007. With the opening of the new office in Osaka, the former Osaka OB Club was replaced with a new one.

A glass-clad tower that reflects the sky is Otsuka Osaka's unique and innovative presence that is now the new office for Otsuka group companies in Japan's second largest city. This new building with unprecedented construction method with window frames function as load-bearing pillars, eliminating pillars throughout the office areas and creating unique open and airy spaces, was designed to bring out the best from a diverse group of employees.



Otsuka's new Osaka office building



Otsuka believes that utilizing the talents of a diverse group of individuals who are not constrained by nationality, gender, or other prejudices promotes innovation and globalization, and Otsuka will therefore continue its efforts to create an employee-friendly work environment.

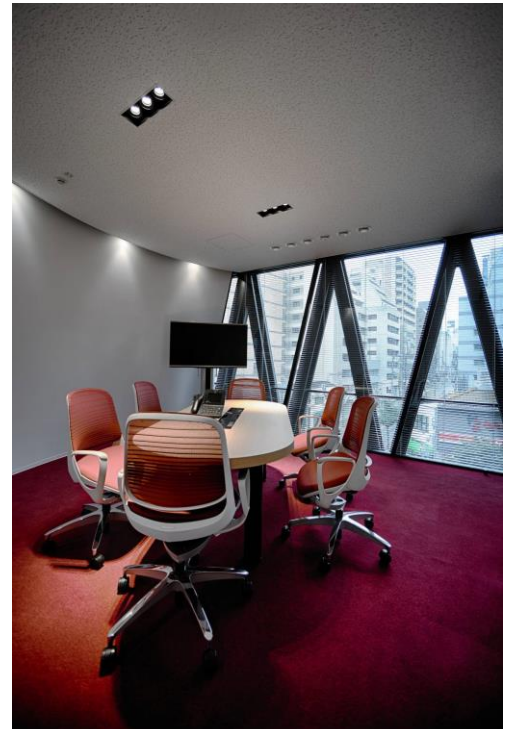
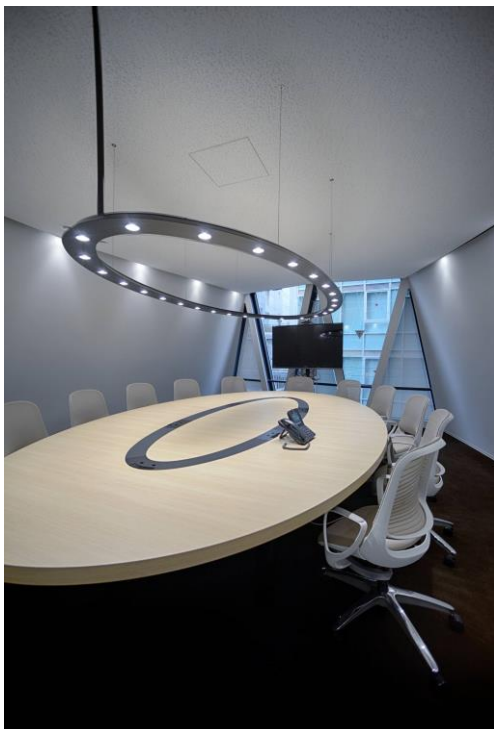
This is Otsuka Group's second office building in Osaka.

Osaka office's OB Club

Atop Osaka's first Otsuka office building, still in use, is the upside down map that can be seen from the news building.

Chairman Otsuka had come across an artist who depicted the world map upside down. That was when it struck him that Otsuka needs to view the world in a totally new way, other than how it has always been depicted.

It is to remind Otsuka employees to think differently rather than to follow the convention that this map is prominently displayed on top of the building.



Interior shots of the new Osaka office